



Crisis
Intervention
Teams
Program
Curriculum

Certified by:
Memphis, Tennessee CIT Model
P.O.S.T. Certified
NAMI National

Assessing Need for Treatment and Accessing Resources



Crisis Intervention Teams Program Curriculum

Certified by:
Memphis, Tennessee CIT Model
P.O.S.T. Certified
NAMI National

Objectives

At the conclusion of this class, trainees will be able to:

- Explain the need for treatment for the consumer
- List the various treatment options available to a CIT officer when dealing with a consumer in crisis
- Explain what role the Crisis Hotline plays in assisting a consumer in crisis, and how a CIT officer can access the hotline



Crisis
Intervention
Teams
Program
Curriculum

Certified by:
Memphis, Tennessee CIT Model
P.O.S.T. Certified
NAMI National

Introduction

- Definition of the need for treatment
- Treatment options, criteria and procedures for referral



Crisis Intervention Teams Program Curriculum

Certified by:
Memphis, Tennessee CIT Model
P.O.S.T. Certified
NAMI National

Need for Treatment

- An individual exhibiting a significant level of instability in thought processes, emotions and/or behaviors which interferes with daily functioning and/or causes concern for the individual's safety or the safety of others.



Crisis
Intervention
Teams
Program
Curriculum

Certified by:
Memphis, Tennessee CIT Model
P.O.S.T. Certified
NAMI National

Treatment Options

- Further evaluation
 - Mobile Crisis Services
 - Hospital Emergency Room and/or Inpatient Treatment
- Non-Medical Detox
- Local Community Mental Health Center (Outpatient Treatment)
- Other Community Resources



Crisis
Intervention
Teams
Program
Curriculum

Certified by:
Memphis, Tennessee CIT Model
P.O.S.T. Certified
NAMI National

Further evaluation is indicated by:

- Risk of harm to self or others (e.g., suicide attempt, homicidal ideation, assaultive behavior)
- Severe depression or anxiety causes serious impairment in social, occupational, or school functioning
- Behavior is considerably influenced by delusions or hallucinations
- Serious impairment in communication, judgement, or reality testing (e.g., sometimes incoherent, behavior inappropriate to the situation, suicidal preoccupation)
- Intoxicated or withdrawal symptoms



Crisis
Intervention
Teams
Program
Curriculum

Certified by:
Memphis, Tennessee CIT Model
P.O.S.T. Certified
NAMI National

Evaluation Resources

- Mobile Crisis Services
- Hospital Emergency Room
- Inpatient Treatment Facility (24-hour protected psychiatric treatment environment)



Crisis
Intervention
Teams
Program
Curriculum

Certified by:
Memphis, Tennessee CIT Model
P.O.S.T. Certified
NAMI National

Mobile Crisis Services

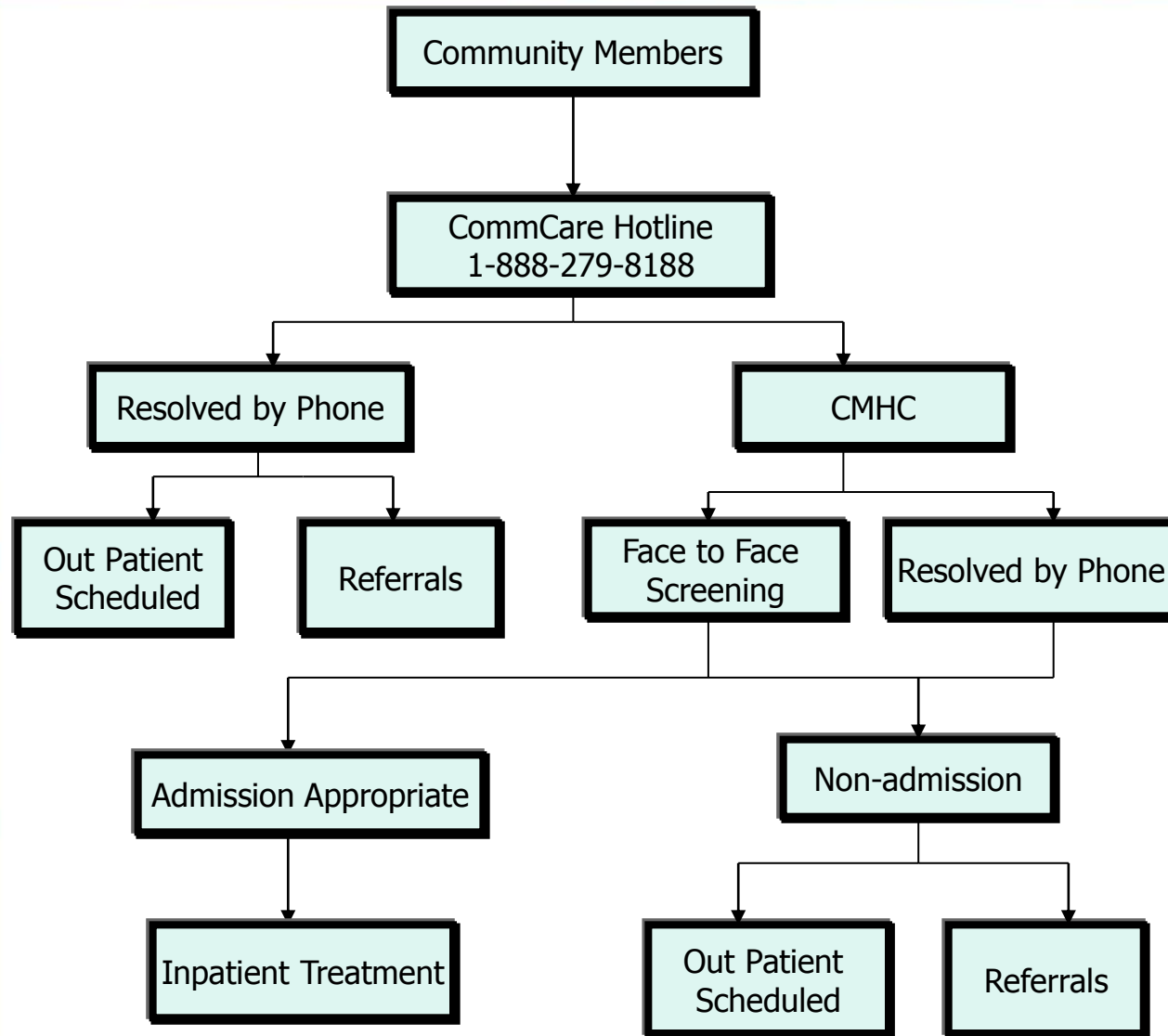
- Professional crisis assessment and intervention throughout the community
- 24 hours a day, 7 days a week, including holidays
- 1-888-279-8188
- Telephone response within 10 minutes
- Face to face response within 1 hour



Crisis Intervention Teams Program Curriculum

Certified by:
Memphis, Tennessee CIT Model
P.O.S.T. Certified
NAMI National

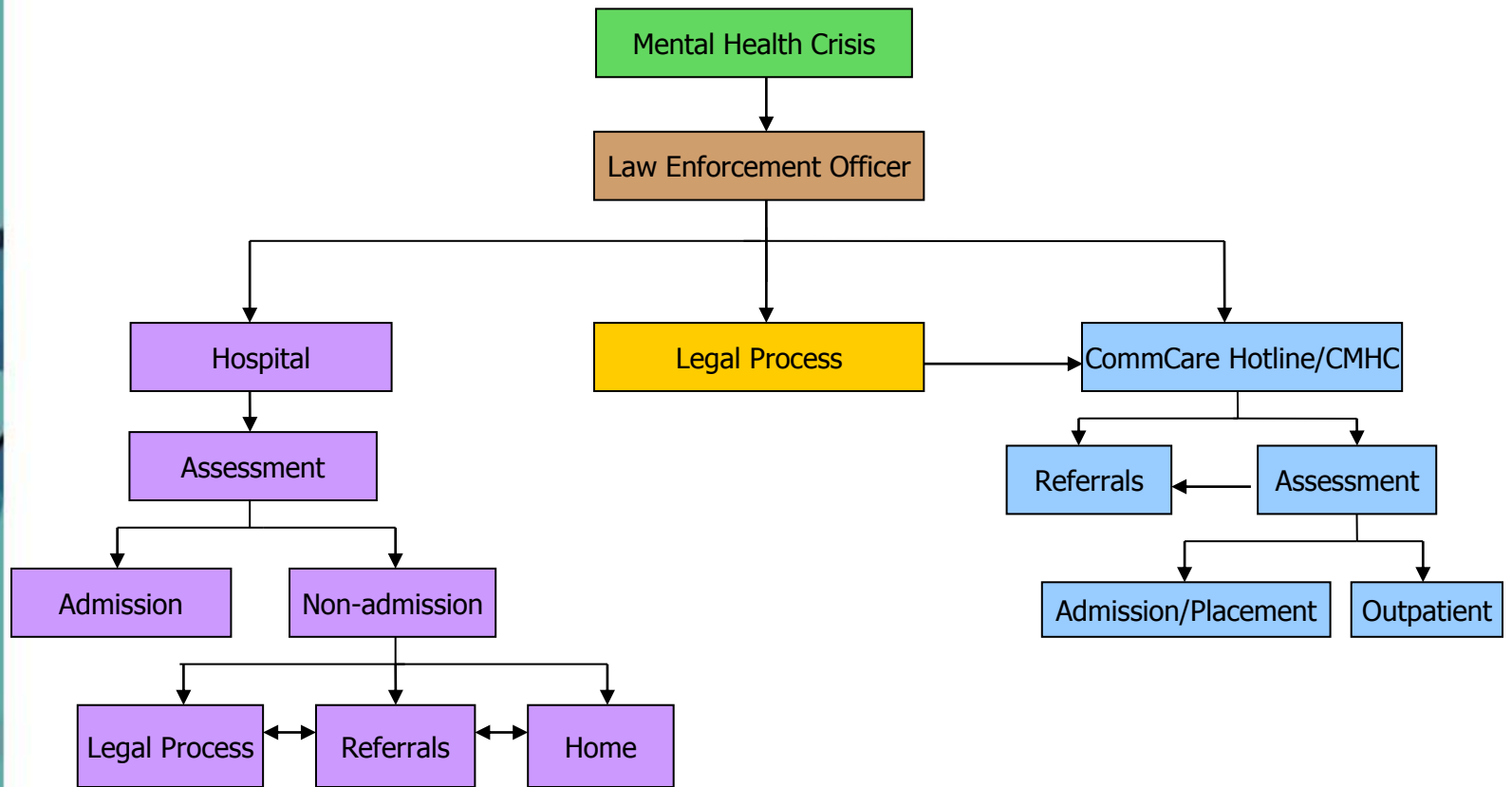
Crisis Hotline Process





Crisis Intervention Teams Program Curriculum

Law Enforcement Intervention with Mental Health Consumers



Hospital Emergency Room Inpatient Treatment



Crisis
Intervention
Teams
Program
Curriculum

- Professional assessment
- Facilitate appropriate treatment
- Possible direct admission for inpatient treatment

*Can go to any ER

*Does not guarantee admission

Certified by:
Memphis, Tennessee CIT Model
P.O.S.T. Certified
NAMI National

Guidance: Inpatient or CommCare Hotline/CMHC



Crisis Intervention Teams Program Curriculum

ER

- Suspicion of drug/alcohol use
- Physically out of control behavior and medical and/or physical restraints needed
- Individual appears disoriented

*if sent by ambulance, please send info regarding police contact

Inpatient

- Actively suicidal/homicidal (no gesture/attempt made)
- Law enforcement has completed affidavits

NOTES:

- This is a guide only, do not change current procedure.
- Follow in-house procedure for medical issues.

CommCare Hotline/CMHC

- Safety of individual and environment established
- Suspicion of mental health issues, but needs unclear
- Need for psychiatric hospitalization identified and assistance needed with appropriate placement
- Hospitalization not indicated, but individual needs temporary removal from the environment
- Mental health resources/referrals, including next day appointment, needed
- Intervention by a mental health professional may help to deescalate the situation and maintain the individual in the home
- Officer/family/individual have questions about mental health medications or needs
- Individual denied admission by hospital and referrals/resources needed



Crisis
Intervention
Teams
Program
Curriculum

Alternatives to Inpatient

- Family monitoring
- Daily check-in with crisis staff
- Group interventions
- Admission to medical bed
- Respite (existing clients)
- Partial hospital for adults
- NDU
- Mobile crisis team



Crisis
Intervention
Teams
Program
Curriculum

Non-Medical (Social) Detox

- Signs and symptoms of withdrawal or evidence that withdrawal is imminent
- Vital signs are stable
- Absence of medical complications or history of medical complications during detox
- Medical screen in ER may be required

Local Community Mental Health Center



Crisis
Intervention
Teams
Program
Curriculum

- Adequate control over behavior and not determined to be danger to self or others
- Requires further monitoring, support and therapeutic interventions
- Wide range of available services, including medication management

Certified by:
Memphis, Tennessee CIT Model
P.O.S.T. Certified
NAMI National



Crisis
Intervention
Teams
Program
Curriculum

Other Community Resources

- Special needs (e.g., language/cultural, sexual assault, hearing impaired, etc.)
- Homeless and Domestic Violence shelters
- Support groups
- Other non-treatment resources (e.g., churches, food pantry, Salvation Army, etc.)



Crisis
Intervention
Teams
Program
Curriculum

Certified by:
Memphis, Tennessee CIT Model
P.O.S.T. Certified
NAMI National

In Conclusion...

- People are in need of psychiatric treatment when exhibiting significant instability in thought processes, emotions and/or behaviors
- A variety of treatment options exist. The best choice depends on the symptoms observed and resources available
- When in doubt, be conservative



Crisis Intervention Teams Program Curriculum

Certified by:
Memphis, Tennessee CIT Model
P.O.S.T. Certified
NAMI National

References

Community Network for Behavioral Healthcare, Inc. Care Management Guidelines. Kansas City, MO: Comm Care, 1997.



**Crisis
Intervention
Teams
Program
Curriculum**

Certified by:
Memphis, Tennessee CIT Model
P.O.S.T. Certified
NAMI National

Mental Health Resources

ACCESS CRISIS INTERVENTION	
CRISIS HOTLINE/MOBILE CRISIS SERVICES	1-888-279-8188

ALCOHOL/DRUG TX & INFORMATION	
KANSAS CITY COMMUNITY CENTER 1514 CAMPBELL KC MO SOCIAL DETOX AND TREATMENT	816-421-6670
NORTHSTAR RECOVERY SERVICES 2801 WYANDOTTE KC MO TREATMENT ONLY	816-751-5151
RENAISSANCE WEST 5840 SWOPE PARKWAY SOCIAL DETOX AND TREATMENT	816-822-8633
SALVATION ARMY 5100 E 24TH SOCIAL DETOX AND TREATMENT	816-483-2281

INFORMATION NUMBERS	
NATIONAL COUNCIL ALCOHOLISM/DRUG DEPENDENCE	816-512-6670
MO DIV OF ALCOHOL & DRUG ABUSE - INFO	816-512-4900

INPATIENT MENTAL HEALTH TREATMENT	
CRITTENTON BEHAVIORAL HEALTH CHILDREN TO AGE 18 10918 ELM ST	816-765-6600
RESEARCH PSYCHIATRIC CENTER ALL AGES 2323 E 63RD ST	816-444-8161
ST LUKE'S NORTHLAND CAMPUS 13 YEARS OLD AND ABOVE 601 S 169 HWY SMITHVILLE MO	816-532-3700
TRUMAN MEDICAL CENTER LAKEWOOD ADULTS 7900 LEE'S SUMMIT RD	816-373-4415
TRUMAN HOSPITAL HILL ADULTS 600 E 22ND ST KC MO	816-404-3717
TWO RIVERS HOSP - KIDS & ADULTS 5121 RAYTOWN RD	816-358-4357
VA MEDICAL CENTER 4801 E. LINWOOD KC MO VETERANS ONLY	816-861-4700
WESTERN MO MENTAL HEALTH CENTER ALL AGES 600 E 22ND ST KC MO	816-512-4000



**Crisis
Intervention
Teams
Program
Curriculum**

Certified by:
Memphis, Tennessee CIT Model
P.O.S.T. Certified
NAMI National

Mental Health Resources cont.

Community Mental Health Center	Service Area
FAMILY GUIDANCE CENTER 510 FRANCIS STREET #200 ST JOSEPH, MO 64901 816-364-1501	Buchanan, Clinton, DeKalb, Andrew, Holt, Gentry, Atchison, Nodaway and Worth Counties
TRUMAN MED CENTER BEHAVIORAL HEALTH 2211 CHARLOTTE KANSAS CITY MO 64108 816-404-5700	South of River - E of State Line N of 39th & W of 1-435
SWOPE PARKWAY MENTAL HEALTH 3801 BLUE PARKWAY KANSAS CITY, MO 64130 816-922-7645	South of 39th and North of 73rd
REDISCOVER MENTAL HEALTH 901 NE INDEPENDENCE AVE LEE'S SUMMIT, MO 64086 816-246-8000	South of 73rd; Grandview, Lee's Summit Raytown, Greenwood, Lone Jack - basically to Cass County line
COMPREHENSIVE MENTAL HEALTH 10901 WINNER RD INDEPENDENCE MO 64502	Independence, Blue Springs, Grain Valley, Buckner, Sibley, Oak Grove, Sugar Creek
TRI-COUNTY MENTAL HEALTH 3100 NE 83RD ST KANSAS CITY, MO 64119 816-468-0400	Clay, Platte, and Ray Counties
PATHWAYS BEHAVIORAL HEALTH 520C BURKARTH RD WARRENSBURG, MO 64093 660-747-1823	Cass, Lafayette, Johnson Counties
NORTH CENTRAL MISSOURI MENTAL HEALTH CENTER 1601 EAST 28TH ST TRENTON, MO 64683 (660) 359-4487	Caldwell, Daviess, Harrison, Mercer, Grundy, Livingston, Linn, Sullivan, and Putnam Counties



Crisis
Intervention
Teams
Program
Curriculum

Certified by:
Memphis, Tennessee CIT Model
P.O.S.T. Certified
NAMI National

The Jackson County Mental Health Court Diversion Program





Crisis
Intervention
Teams
Program
Curriculum

Certified by:
Memphis, Tennessee CIT Model
P.O.S.T. Certified
NAMI National

What is Mental Health Court?

- Court system that diverts mentally ill persons with municipal offenses and/or low class felonies out of jails and into community-based treatment
- Collaborative effort initiated by Kathryn Shields, Jackson County Executive and is currently supported by Mike Sanders.
- 2002 – Present



Crisis Intervention Teams Program Curriculum

Diversion

- Specific programs in which people with mental illness and co-occurring disorders receive treatment in the community rather than being sentenced to jail.
- Diversion can occur at any point in the legal process from initial police contact to probation and parole.



Crisis Intervention Teams Program Curriculum

Certified by:
Memphis, Tennessee CIT Model
P.O.S.T. Certified
NAMI National

Nature of the Problem

- NYPD reports they respond to a call involving a person with mental illness once every 6.5 minutes (2002).
- LAPD reports spending approximately 28,000 hours a month on these calls (DeCuir and Lamb, 1996).
- In one year, law enforcement officers in Florida transported a person with mental illness for involuntary examination (Baker Acts) over 40,000 times, which exceeds the number of arrests in the state for aggravated assault or burglary (2000).
- A recent U.S. Justice study found that at midyear 2005, more than half of all prison and jail inmates had a mental health problem including 705,600 (56%) inmates in State prisons, 78,800(45%) in Federal prisons and 479,900 (64%) in local jails (2006).



Crisis Intervention Teams Program Curriculum

Certified by:
Memphis, Tennessee CIT Model
P.O.S.T. Certified
NAMI National

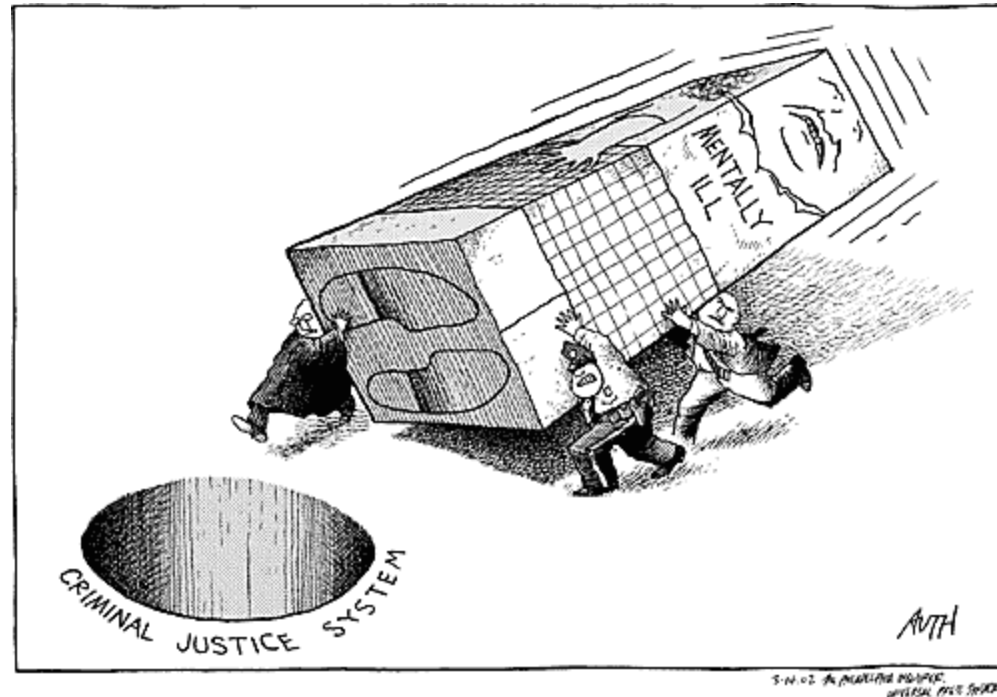
Nature of the Problem cont.

- Nearly a quarter of both State prisoners and jail inmates who had a mental health problem, compared to a fifth of those without, had served 3 or more prior incarcerations (2006).
- Nationally, 95% of those who commit suicide in correctional facilities have a treatable psychiatric illness; 30% have made previous attempts.
- Approximately 54% of inmates in the Municipal Correctional Institution (MCI) in Kansas City are mentally ill and 38% reported having a co-occurring disorder.
- Over 75% of Missouri inmates with mental illness have a history of contacts with the criminal justice system prior to the current sentence.



Crisis Intervention Teams Program Curriculum

Nature of the Problem cont.



Artist: Tony Auth Source: <http://www.uclick.com/client/nyt/ta/2002/03/14/index.html>

Certified by:
Memphis, Tennessee CIT Model
P.O.S.T. Certified
NAMI National



Crisis
Intervention
Teams
Program
Curriculum

Certified by:
Memphis, Tennessee CIT Model
P.O.S.T. Certified
NAMI National

In Other Words ...

- The Jackson County Mental Health Court Diversion Program is intended to provide more appropriate and effective treatment of the mentally ill offender.



Crisis
Intervention
Teams
Program
Curriculum

Program Summary

- Voluntary
- Six (6) months minimum participation
- Attend court monthly
- Monitoring appointments monthly
- Treatment is mandatory, but individualized
- Random Urinalysis Testing

Certified by:
Memphis, Tennessee CIT Model
P.O.S.T. Certified
NAMI National



Crisis Intervention Teams Program Curriculum

Certified by:
Memphis, Tennessee CIT Model
P.O.S.T. Certified
NAMI National

Features

- 3 courts
 - Jackson County Circuit Drug Court
 - Kansas City Municipal Court
 - Lee's Summit Municipal Court
- Multiple points of entry
 - Judges and Attorneys
 - CIT/Law Enforcement
 - Corrections
 - Case Managers or Therapist
 - Family or Consumer
- Program staff
 - Court Monitors
 - Program Manager
 - Administrative Asst.





Crisis
Intervention
Teams
Program
Curriculum

Evolution

- National models: Broward County, FL (Fort Lauderdale) and King County, WA (Seattle)
- Initiated in Lee's Summit Municipal Court in March 2002
- Initiated in Kansas City Municipal Court in April 2002
- Followed by a partnership with the Jackson County Circuit Drug Court later in 2002
- Approximately 110 MHC's nationally

Certified by:
Memphis, Tennessee CIT Model
P.O.S.T. Certified
NAMI National



Crisis
Intervention
Teams
Program
Curriculum

Certified by:
Memphis, Tennessee CIT Model
P.O.S.T. Certified
NAMI National

Program Goals

- Foster public safety
- Improve the care and treatment of persons with mental illness who are involved in the legal system
- Decrease frequency and duration of contact with the criminal justice system by mentally ill individuals in our community
- Increase cooperation and coordination between the mental health treatment system and the criminal justice system
- Ease the burden on the criminal justice system
- More efficiently utilize resources



Crisis
Intervention
Teams
Program
Curriculum

Certified by:
Memphis, Tennessee CIT Model
P.O.S.T. Certified
NAMI National

Target Population

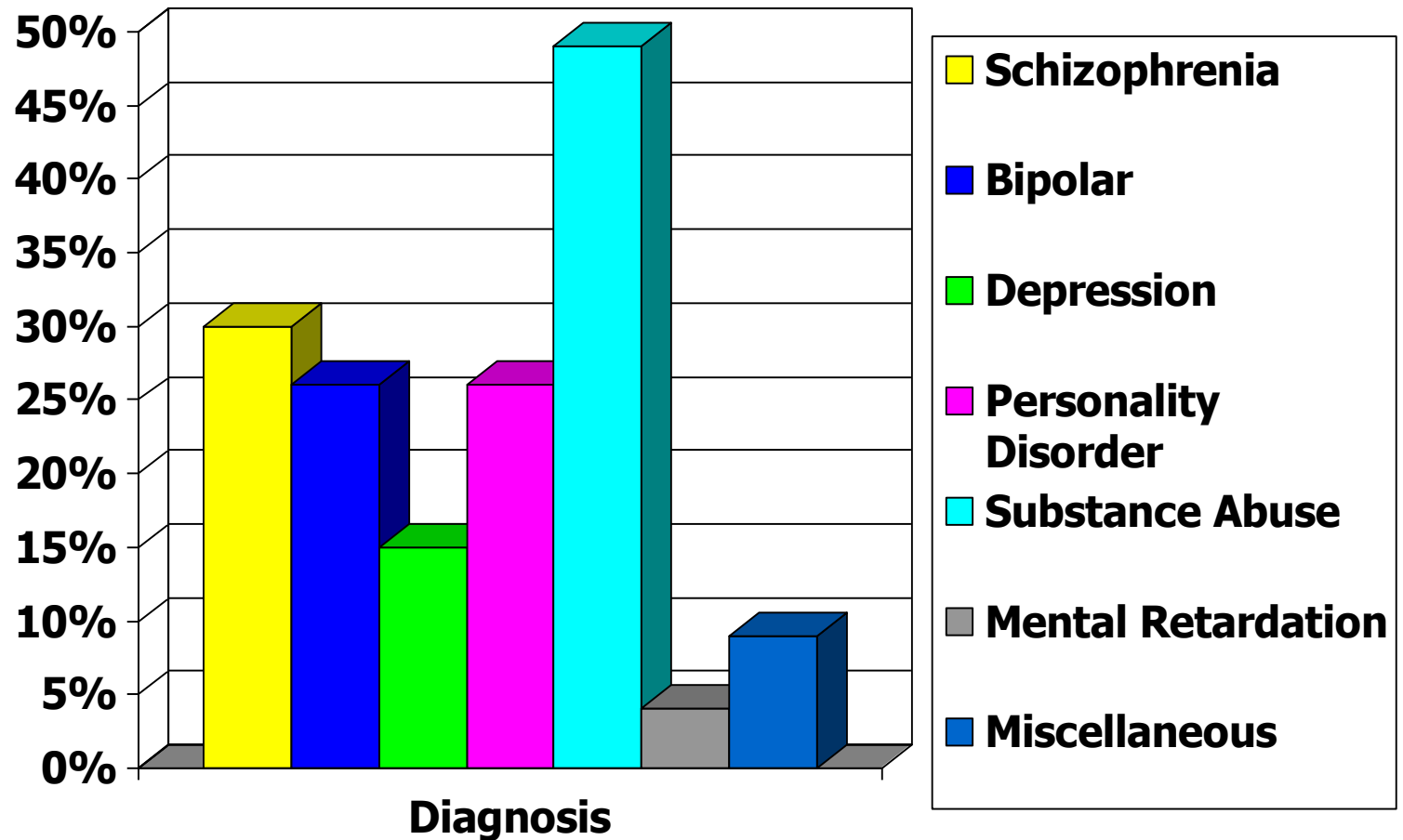
- Jackson County residents who are charged with a municipal and/or a low class felony offense and who are experiencing one of the following:
 - Severe and persistent mental illness (SPMI)
 - Brain injury
 - Mental retardation
 - Dual diagnosis (SPMI and Substance Abuse)



Crisis Intervention Teams Program Curriculum

Certified by:
Memphis, Tennessee CIT Model
P.O.S.T. Certified
NAMI National

Diagnostic Characteristics





Crisis
Intervention
Teams
Program
Curriculum

Client Characteristics

- Kansas City Municipal Court
 - lower socioeconomic status
 - homeless/transient
 - entitlement system recipient
 - minimal social support
 - transportation is a barrier
 - illness is typically chronic/more acute crisis



Crisis
Intervention
Teams
Program
Curriculum

Certified by:
Memphis, Tennessee CIT Model
P.O.S.T. Certified
NAMI National

Client Characteristics cont.

- Lee's Summit Municipal Court
 - higher socioeconomic status
 - stable housing/transportation
 - privately insured (some entitlement benefits)
 - stronger social support network
 - illness is typically chronic/less acute crisis



Crisis
Intervention
Teams
Program
Curriculum

Certified by:
Memphis, Tennessee CIT Model
P.O.S.T. Certified
NAMI National

Client Characteristics cont.

- Jackson County Drug Court
 - mixed bag
 - poor physical health
 - diminished social support
 - lengthier criminal record
 - repeat felons
 - more experience with “the system”

How does Mental Health Court differ from traditional court?



Crisis
Intervention
Teams
Program
Curriculum

- The preference of the Mental Health Court is to defer prosecution and sentencing by stipulating, as a condition of release, community based treatment services rather than jail time, probation, or other legal sanctions.

Certified by:
Memphis, Tennessee CIT Model
P.O.S.T. Certified
NAMI National



Crisis
Intervention
Teams
Program
Curriculum

Certified by:
Memphis, Tennessee CIT Model
P.O.S.T. Certified
NAMI National

Community Partnership

- COMBAT
- Jackson County Mental Health Levy Board
- Swope Health Services
- Truman Behavioral Health Network (TBHN)
- Comprehensive Mental Health Services
- Rediscover Mental Health Services
- Western Missouri Mental Health
- CIT/Law Enforcement
- National Alliance on Mental Illness
- Municipal Correctional Institution (MCI)



Crisis
Intervention
Teams
Program
Curriculum

Certified by:
Memphis, Tennessee CIT Model
P.O.S.T. Certified
NAMI National

Incentives to Comply

- Gift Certificates
- Change in treatment
- Dismissed charges
- Graduation from the program
- Moved to the top of the docket
- Decrease in hearings before the Judge
- Reduction in fees/fines



Crisis
Intervention
Teams
Program
Curriculum

Certified by:
Memphis, Tennessee CIT Model
P.O.S.T. Certified
NAMI National

Sanctions for Noncompliance

- Increased hearings before the Judge
- Increase in treatment
- Jail time as a sanction
- Reprimands from the Judge
- Community service
- Termination



Crisis
Intervention
Teams
Program
Curriculum

How to get involved:

- Always wear your C.I.T. pin!
- Attend a MHC docket
- Increase awareness of mental illness
- Volunteer with NAMI
- Petition to get this program in your area

Certified by:
Memphis, Tennessee CIT Model
P.O.S.T. Certified
NAMI National