



Georgia CIT

Crisis Intervention Team



Law Enforcement

NAMI Advocates

Community Providers

Georgia CIT Vision



Vision: A Georgia where people with mental illness and other brain disorders are treated, not incarcerated

Law Enforcement

NAMI Advocates

Community Providers

Georgia CIT Mission



Mission:

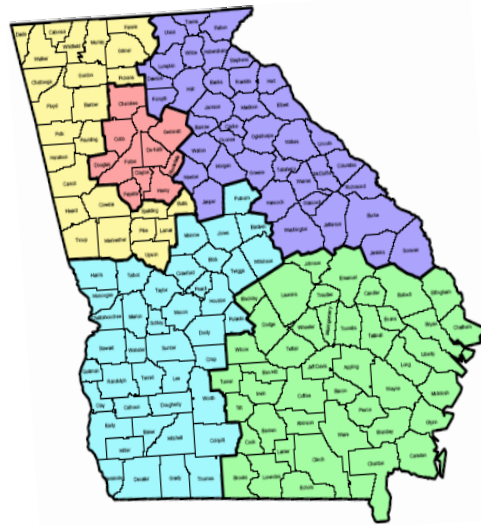
Equip Georgia CIT Officers with the skills to assist people with mental illness and other brain disorders in crisis thereby advancing public safety and reducing stigma



Statewide CIT Goal



GEORGIA



- Georgia Representatives** (*July 2004*)
- Fulton County** (*December 2004*)
- Cherokee County** (*February 2005*)
- Fulton County** (*February/March 2005*)
- Cobb County** (*March 2005*)
- Barrow County** (*April 2005*)
- Chatham County** (*May 2005*)
- Dept of Corrections** (*June 2005*)

Goal:

Certify 20% Georgia CIT Officers

Three-way Partnership



Law
Enforcement
& Public Safety

CIT

Community
MH/DD/AD
Providers



Law Enforcement

NAMI Advocates

Community Providers

CIT Advisory Board



Law Enforcement	NAMI & Advocates	Community
<p>Lt. Trudy Boyce, APD* Dir. Vernon Keenan, GBI Bill Kissel, Dept Corrections Harriett Lawrence, GPSTC Dr. Janet Oliva, GBI* Paul Maharry, Chiefs' Assoc Tonya Welch, Sheriffs' Assoc Ronnie Lane, GA DJJ</p>	<p>Lei Ellingson, Carter Center Nora Haynes, Dept of Ed* Dave Lushbaugh, NAMI*</p>	<p>Dr. Michael Compton, Emory* David Covington, Behavioral Health Link* Larry Fricks, DHR/Consumer Dir. Gwen Skinner, DHR DMHDDAD Dr. Keith Wood, Grady</p>
<p>CIT Steering Committee: Members denoted by * above plus the following: Don Daves, NAMI; Diane Reeder, NAMI; Mary Yoder, AADD</p>		

Law Enforcement

NAMI Advocates

Community Providers



NAMI Family/Advocates Crisis Intervention Team



Law Enforcement

NAMI Advocates

Community Providers

Who/What is NAMI?



- Family-based, grassroots, support and advocacy organization
- We are the family members, treatment professionals and friends of persons with severe mental illness
- We believe in recovery
- We see mental illness and other brain disorders like any other disease, such as heart disease, diabetes or cancer

Law Enforcement

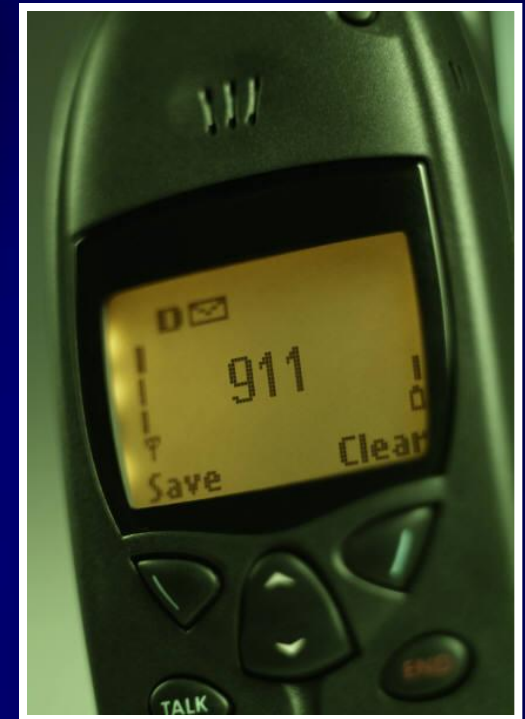
NAMI Advocates

Community Providers

Police & Persons in Crisis



- People with mental illnesses sometimes discontinue their medications. Other times they have never been to treatment.
- The person may become agitated, experience psychosis or even feel suicidal.
- When a crisis occurs, the police are often called to intervene.



Memphis Model CIT



- In 1987, an unarmed man with mental illness was shot and killed by Memphis police; a public outcry followed
- In response, the Memphis PD and the local NAMI affiliate developed CIT (Crisis Intervention Team)

NAMI CIT Objectives



- Whenever possible, ensure consumer receives treatment rather than jail
- Avoid unnecessary force by ensuring the CIT officer recognizes a mental illness or other brain disorder
- Ensure CIT officer has skills to de-escalate a person in crisis

Combating Stigma



Notice the differences in the way the media addresses a person with diabetes versus a person with mental illness.

Law Enforcement

NAMI Advocates

Community Providers

Reducing Stigma



President's New Freedom Commission Report on Mental Health

- Stigma motivates us to fear, reject, avoid, and discriminate against people with mental illnesses (common in US and Western nations)
- Stigma leads others to avoid living, socializing, or working with, renting to, or employing people with mental illness, especially disorders like schizophrenia.
- Stigma leads to low self-esteem, isolation, hopelessness.
- Due to stigma, people with mental health problems may be ashamed, conceal symptoms or fail to seek treatment.



Law Enforcement Crisis Intervention Team



Law Enforcement

NAMI Advocates

Community Providers

All Volunteer Program



- CIT are regular patrol officers who volunteered
- Many CIT officers have family or friends with mental illness or other brain disorders
- This program has to come from the heart

Immediate Response



- 911 dispatch identifies a call where a consumer with mental illness or other brain disorder is in crisis
- The closest CIT officer is dispatched to the scene along with other law enforcement



Crisis Intervention



De-escalation Training

- The CIT officer attempts from the beginning to use the consumer's name
- The CIT officer uses compassion, respect, listening skills and knowledge of crisis intervention stages
- They explain the process to consumers and families

Positive CIT Outcomes



- Decreased number of people with mental illness incarcerated
- Decreased officer and consumer injuries
- CIT officers become consumer advocates
- Consumers more willing to call police for help

CIT Identification



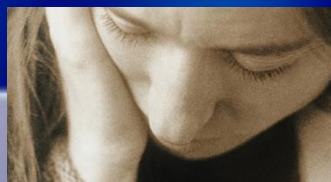
- Consumers can identify CIT officers by their Georgia Crisis Intervention Team pin
- 24/7 program
- CIT officers are in charge upon arrival of the scene





Community Providers

Crisis Intervention Team



Law Enforcement

NAMI Advocates

Community Providers

40-Hour CIT Curriculum



Monday	Tuesday	Wednesday	Thursday	Friday
Mental Illness and Other Brain Disorders	Site Visits/ Consumer Interaction	Mental Illness and Other Brain Disorders	De-escalation Skills	De-escalation Skills
<i>Lunch</i>	<i>Lunch</i>	<i>Lunch</i>	<i>Lunch</i>	<i>Lunch</i>
Mental Illness and Other Brain Disorders	Site Visits/ Consumer Interaction	De-escalation Skills	Mental Illness and Other Brain Disorders	Post-test & Graduation

Law Enforcement

NAMI Advocates

Community Providers

40-Hour CIT Curriculum



- Volunteer experts from the community provide training
- P.O.S.T. approved by the Georgia Peace Officer Standards and Training Council
- Includes pre-test and post-test assessments

Community Services



- "...the expectation that training by itself will resolve the issues of stigma is not realistic. Mere training is not enough to compensate when there is no infrastructure of services and care. To combat the devastating effects and trauma brought about by the stigma of mental illness requires a profound community outcry, joined with linkages to appropriate community service infrastructures" (Major Sam Cochran)

Emergency Receiving Site



15 Minutes to Drop Off Consumer for Evaluation

Law Enforcement

NAMI Advocates

Community Providers

Single Point of Entry



If you are in

crisis

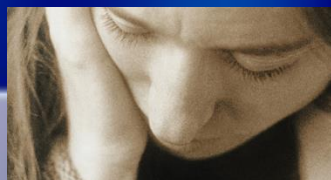
SPOE

- In Fulton/Clayton, professional counselors are available at **1-866-821-0465**
- 24/7 psychiatric crisis line
- Access and linkage to community services
- Screening for intensive services, GRH/Atlanta, DeKalb Crisis, St. Jude's & Newport Detox



Georgia CIT Summary

Crisis Intervention Team



Law Enforcement

NAMI Advocates

Community Providers

New Freedom Commission



President's Report on Mental Health

On April 29, 2002, the President identified three obstacles preventing Americans with mental illnesses from getting the excellent care they deserve:

- Stigma that surrounds mental illnesses,
- Unfair treatment limitations placed on mental health benefits in private health insurance, and
- The fragmented mental health service delivery system.

Georgia CIT Summary



Crisis Intervention Team



Connecting persons with mental illnesses and other brain disorders with treatment professionals